

# Hampshire Water Transfer and Water Recycling Project

## Environmental Statement – Figure 4.4 Indicative Pipeline Route following amendments to the Best Engineering Solution Pipeline Route at Stage 4

VOLUME NUMBER: 6

PLANNING INSPECTORATE SCHEME NUMBER: WA010002

APPLICATION DOCUMENT REFERENCE: 6.3

APFP REGULATION: 5(2)(a)

May 2026

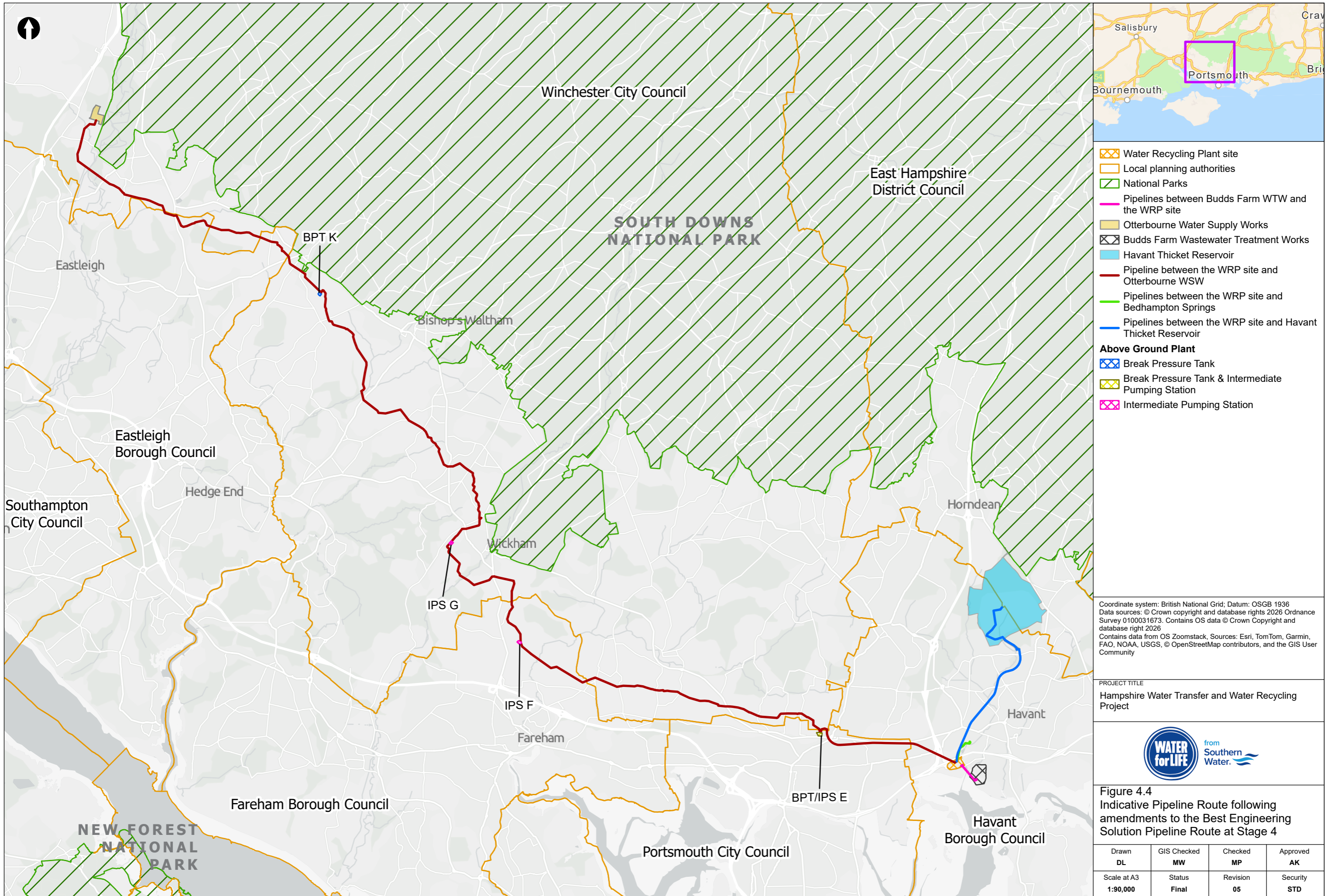
Version 0



from  
**Southern  
Water** 

The Southern Water logo consists of three stylized, wavy blue lines of varying lengths, positioned to the right of the text 'Southern Water'.





- Water Recycling Plant site
  - Local planning authorities
  - National Parks
  - Pipelines between Budds Farm WTW and the WRP site
  - Otterbourne Water Supply Works
  - Budds Farm Wastewater Treatment Works
  - Havant Thicket Reservoir
  - Pipeline between the WRP site and Otterbourne WSW
  - Pipelines between the WRP site and Bedhampton Springs
  - Pipelines between the WRP site and Havant Thicket Reservoir
- Above Ground Plant**
- Break Pressure Tank
  - Break Pressure Tank & Intermediate Pumping Station
  - Intermediate Pumping Station

Coordinate system: British National Grid; Datum: OSGB 1936  
 Data sources: © Crown copyright and database rights 2026 Ordnance Survey 0100031673. Contains OS data © Crown Copyright and database right 2026  
 Contains data from OS Zoomstack, Sources: Esri, TomTom, Garmin, FAO, NOAA, USGS, © OpenStreetMap contributors, and the GIS User Community

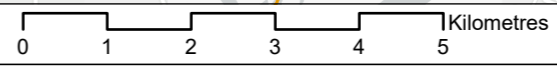
PROJECT TITLE  
 Hampshire Water Transfer and Water Recycling Project



Figure 4.4  
 Indicative Pipeline Route following amendments to the Best Engineering Solution Pipeline Route at Stage 4

Drawn <b>DL</b>	GIS Checked <b>MW</b>	Checked <b>MP</b>	Approved <b>AK</b>
Scale at A3 <b>1:90,000</b>	Status <b>Final</b>	Revision <b>05</b>	Security <b>STD</b>

© Southern Water 2026  
 This document is issued for the party which commissioned it and for specific purposes connected with the captioned project only. It should not be relied upon by any other party or used for any other purpose. We accept no responsibility for the consequences of this document being relied upon by any other party, or being used for any other purpose, or containing any error or omission which is due to an error or omission in data supplied to us by other parties.



Drawing Number  
**PC5223-RHD-ES-ZZ-D-Z-0110**